

**INDOFINE Chemical Company, Inc.**

121 Stryker Lane, Building 30  
 Hillsborough, NJ 08844 USA  
 Phone: (908) 359-6778; Fax: (908) 359-1179

**GC ANALYSIS**

**025062S**                      **SABINENE**                      **Lot No.: 18091412**

**IDENTIFICATION**

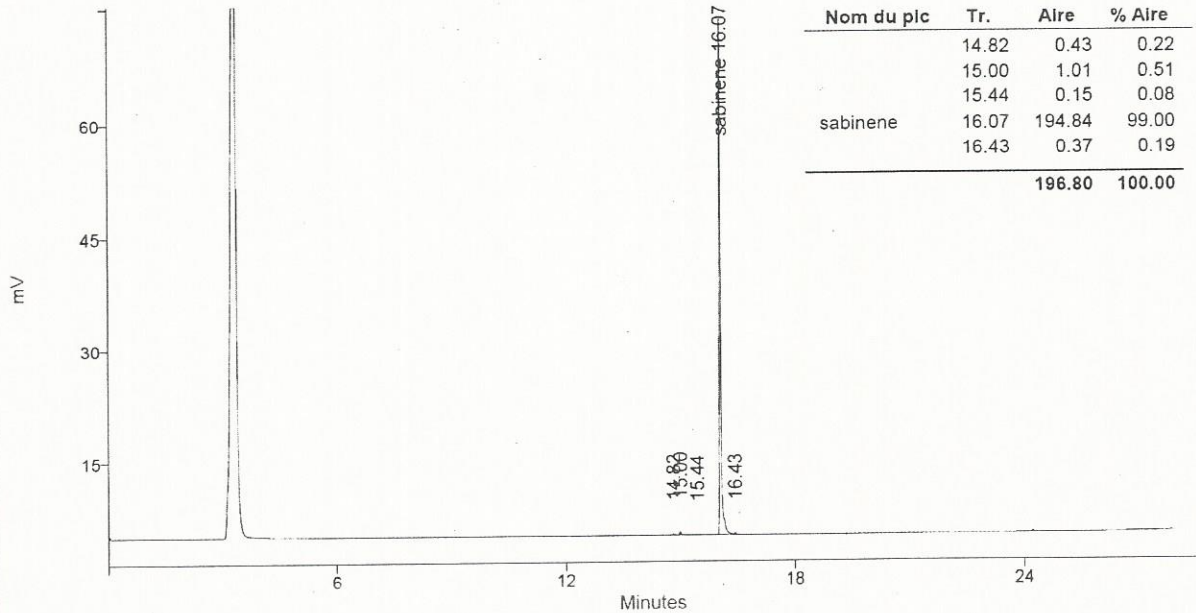
Molecular formula	C <sub>10</sub> H <sub>16</sub>
Molecular weight	136.24

**ANALYSIS**

TEST	SPECIFICATION <i>(June 2016, version 10)</i>	RESULT
Appearance	Liquid	Conform
Moisture	_____	< 0.2%
Assay (GC)*	≥98.5%	Conform

**GC**

Column **DB5 Capillary 30 m x 0.25 mm x 0.25 μm**  
 Temperature **Column : isotherm 10 min at 40°C, then 40 to 220°C (10°C/min)**  
 Injector 200°C, Detector 230°C  
 Detector **FID**  
 Carrier gas **Helium 1ml/mn**  
 Sample solvent **Isopropanol**



Contains 1000ppm BHT as inhibitor

*The values given on the 'Certificate of Analysis' are the results determined at the time of analysis*

Storage **Flammable. Store at +2/8°C.**  
 Transport conditions **Ambient temperature**